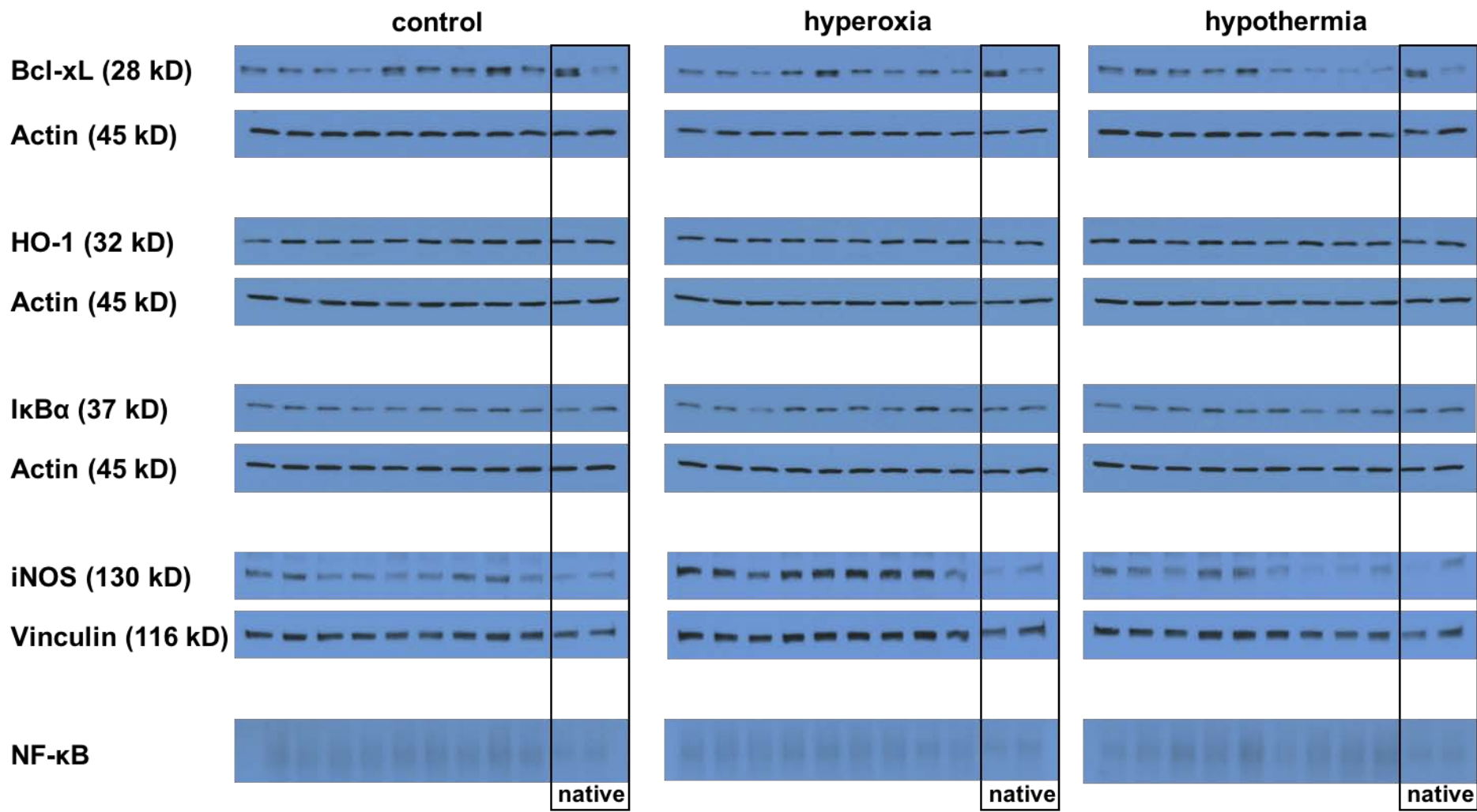


Supplemental Digital Content 4 - Figure 2



Original western blots and electrophoretic mobility shift assays (EMSA) for Nf-κB of kidney specimens.
Bcl-xL: B-cell lymphoma-extra large; HO-1: heme oxygenase-1; IκBα: inhibitor of nuclear factor kappa B; iNOS: inducible isoform of the nitric oxide synthase; NF-κB: nuclear transcription factor kappa B. Actin and vinculin served as loading controls. Native animals did not undergo surgery and hemorrhagic shock.