

SUPPLEMENTAL DIGITAL CONTENT (SDC)

Contents:

SUPPLEMENTARY TABLES

- Supplementary Table S1. SF-12 Results.

SUPPLEMENTARY FIGURES

- Supplementary Figure S1. Illustrates patients grading according the Kellgren-Lawrence scale.
- Supplementary Figure S2. Compares the efficacy of MSC versus the active control (hyaluronic acid)

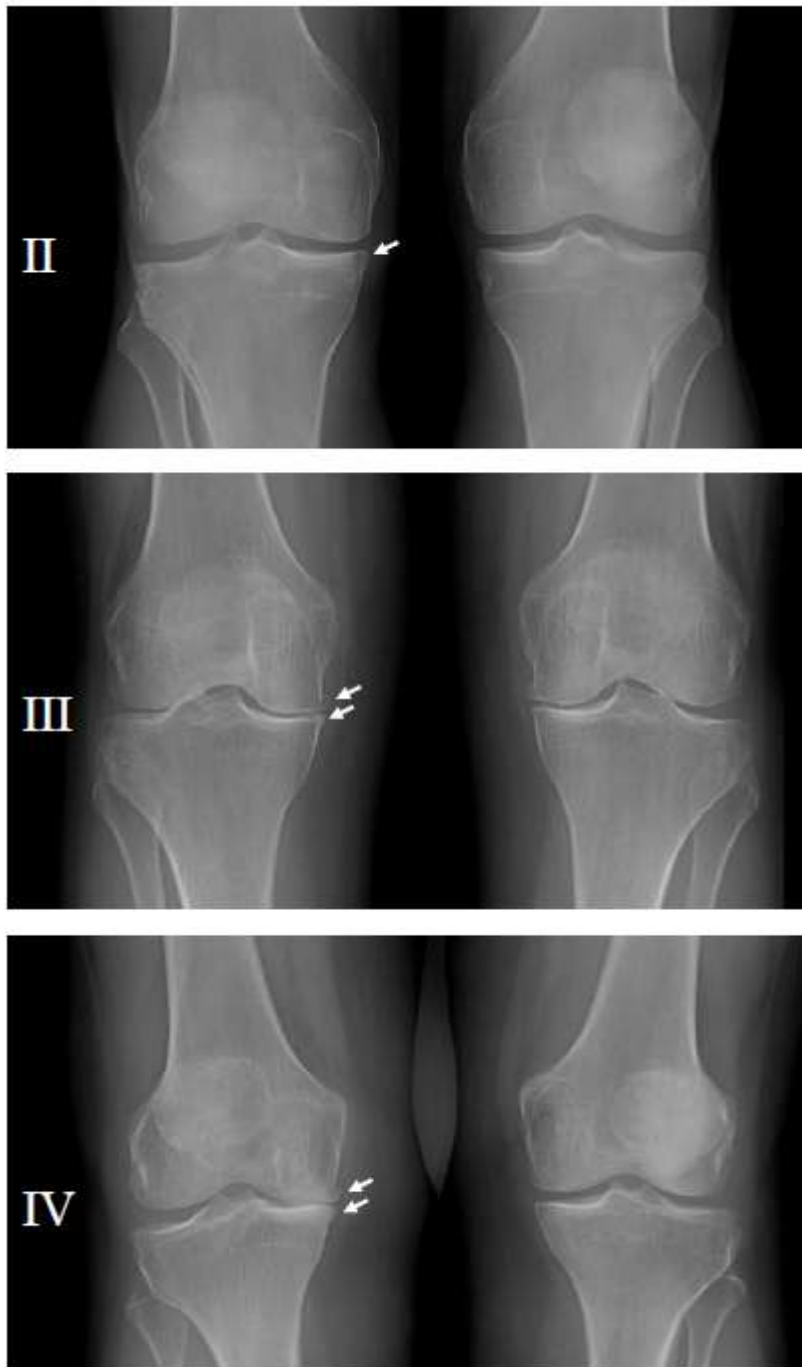
SDC, Table S1.**Table S1. SF-12 Results.**

	N	V1	V2	V3	V4	V5
PCS, Control	15	35±8	37±9	39±8	39±8	40±8
PCS, +MSC	15	40±9	40±10	43±11	44±10	45±11
MCS, Control	15	49±9	50±11	47±10	48±10	47±11
MCS, +MSCs	15	54±10	52±10	50±10	54±12	51±12

The mean \pm SE values of physical (PCS) and mental component summary (MCS) at every visit are given.

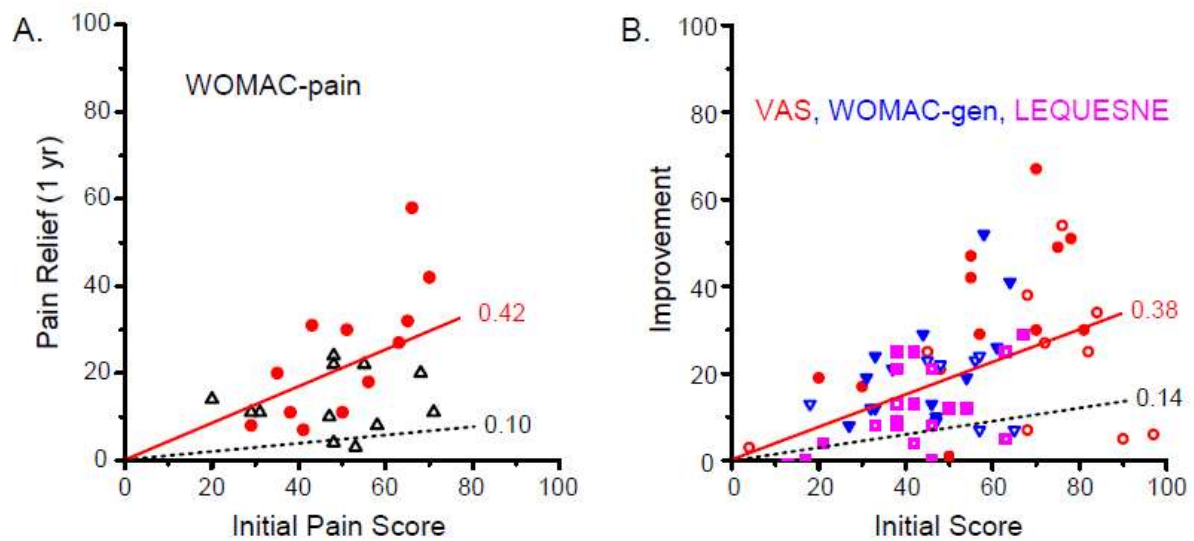
*Comparisons: Repeated measures ANOVA, Bonferroni multiple comparisons test.

Comparisons of V1 to V2, V3, V4 and V5 were, in all the cases, not significant ($p>0.05$).

SDC, Figure S1

Supplementary Figure S1. Illustrates patients' grading according to the Kellgren-Lawrence scale. Anterior-Posterior weight-bearing views of three patients with right medial femorotibial osteoarthritis. From top to bottom, grade II with mild joint narrowing and small osteophyte (arrow), grade III with moderate joint narrowing and two osteophytes (arrows), and grade IV with severe joint narrowing and two osteophytes (arrows).

SDC, Figure S2



Supplementary Figure S2. The efficacy of MSC treatment (closed symbols) versus the active control (hyaluronic acid; open symbols) was compared. Efficacy is represented as the slope of the best fit line between the initial score and improvement (Huskisson, 1974), this value is shown on the right of the lines. The fitted lines were forced to pass through the origin, continuous line, MSC-treated patients; dotted lines, control patients. In **A**, the results of the pain subscale of the WOMAC test are shown. The slopes (mean \pm SE; 0.42 ± 0.10 and 0.10 ± 0.08) differed significantly ($p < 0.02$; Student's t-test). In **B**, the results of the three tests, VAS (circles), Lequesne (squares) and the general WOMAC scale (inverted triangles) were plotted together on the same scale, and fitted with straight lines, MSC-treated= filled symbols and continuous line ($n=45$), controls= open symbols and dotted line ($n=45$). The slopes (mean \pm SE; 0.38 ± 0.06 and 0.14 ± 0.05) differed significantly ($p < 0.005$; Student's t-test).

Huskisson EC. (1974). Measurement of pain. *Lancet* **2**, 1127-1131.