

Five-year outcome of an early everolimus-based quadruple immunosuppression in lung transplant recipients: follow-up of the 4EVERLUNG study

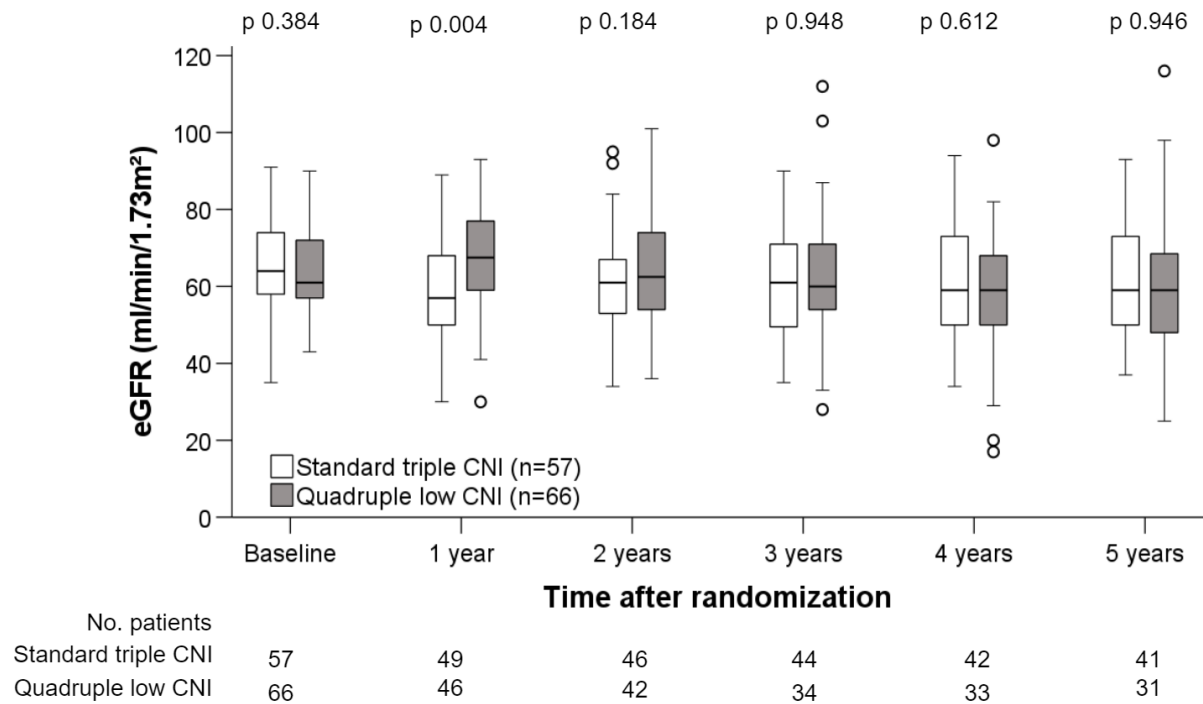
Nikolaus **Kneidinger**, Christina **Valtin**, Ina **Hettich**, Björn Christian **Frye**, Alexandra **Wald**, Heinrike **Wilkens**, Vasiliki **Bessa**, Jens **Gottlieb**

Supplementary Table 1. Characteristics of patients in whom the assigned regimen was switched compared to the per protocol population.

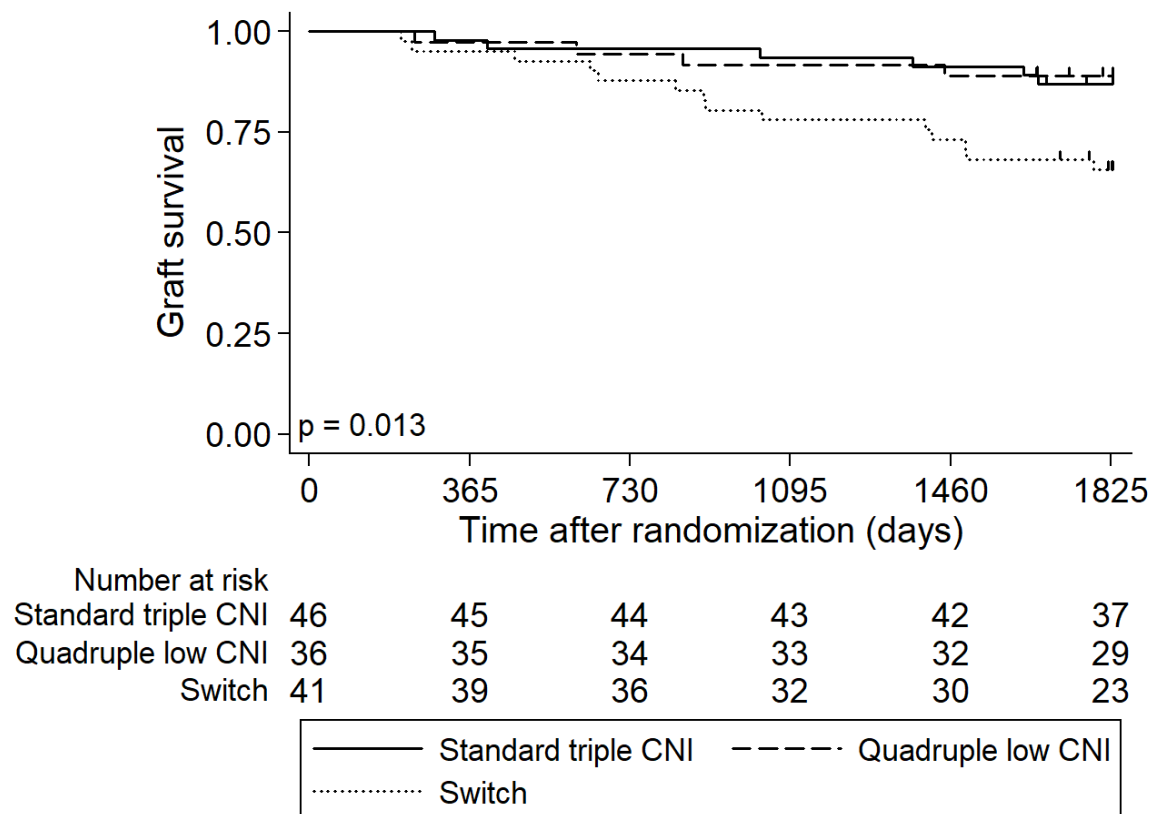
Characteristics	Triple n=46 (37)	Quadruple n=36 (29)	Switch n=41 (33)	p
Gender (female), n (%)	17 (37)	15 (42)	13 (32)	0.662
Age (y), median (25 th , 75 th percentile)	56 (50, 61)	59 (49, 61)	58 (53, 60)	0.910
Primary diagnosis, n (%)				0.749
Obstructive	20 (43)	15 (42)	19 (46)	
Restrictive	22 (48)	16 (44)	20 (49)	
Cystic fibrosis	4 (9)	5 (14)	2 (5)	
Thromboembolism pre randomization, n (%)	2 (5)	2 (6)	3 (8)	0.839
CMV risk status pre randomization, n (%)				0.117
Low risk, D-R-	8 (17)	7 (20)	12 (29)	
Intermediate risk, R+	30 (65)	20 (56)	17 (42)	
High risk, D+R-	8 (17)	8 (23)	12 (29)	
Donor-specific antibodies post randomization, n (%)	5 (11)	1 (3)	9 (22)	0.035
No. of acute rejections (≥A1) post randomization, n (%)	2 (4)	2 (6)	14 (34)	<0.001
Dialysis, n (%)	-	-	3 (7)	0.050
Renal transplant, n (%)	-	-	-	
Malignancy, n (%)	7 (15)	8 (22)	7 (17)	0.704
Thrombotic events post randomization, n (%)	5 (11)	8 (22)	9 (22)	0.292
CMV infection, n (%)	19 (41)	9 (25)	19 (46)	0.136
CMV hospitalizations, n (%)	3 (7)	1 (3)	6 (15)	0.145
Community-acquired respiratory viral infections, n (%)	16 (35)	12 (33)	21 (51)	0.188
No. of hospitalizations, median (25th, 75th percentile)	1 (0, 2)	1 (0, 3)	2 (1, 5)	0.005
Hospitalization days, median (25th, 75th percentile)	9 (0, 22)	6 (0, 28)	21 (5, 49)	0.009
Hospitalization for bacterial /fungal infections, n (%)	14 (30)	9 (25)	16 (39)	0.407
Chronic lung allograft dysfunction, n (%)	14 (30)	5 (14)	14 (34)	0.106
Phenotype				

Bronchiolitis obliterans syndrome	8 (17)	4 (11)	4 (10)	0.365
Restrictive allograft syndrome	2 (4)	-	4 (10)	
Mixed	2 (4)	1 (3)	5 (12)	
Undefined / unclassified	2 (4)	-	1 (2)	
Re-do lung transplant, n (%)	2 (4)	-	-	0.182
Deceased, n (%)	5 (11)	4 (11)	14 (34)	0.008
Cause of death, n (%)				0.118
Unknown	1 (2)	-	-	
CLAD	3 (7)	1 (3)	8 (20)	
Infection	-	-	3 (7)	
Malignancy	-	1 (3)	1 (2)	
Cardiovascular	1 (2)	2 (6)	-	
Other	-	-	2 (5)	

Data are presented as median (25th, 75th percentile) and number and percentage, respectively. List of abbreviations: CMV, Cytomegalovirus; CLAD, chronic lung allograft dysfunction.



Supplementary Figure 1. Estimated glomerular filtration rate over the observation period according the actual regimen. Patients are represented in the respective group until the actual switch. Abbreviation of definitions: CNI, calcineurin inhibitor; eGFR, estimated glomerular filtration rate formula; ITT, intention to treat; PP, per protocol.



Supplementary Figure 2. Graft-survival by Kaplan Meier analysis in patients switched to an alternative regimen compared to the PP population. Abbreviation of definitions: CNI, calcineurin inhibitor; PP, per protocol.