

SUPPLEMENTARY MATERIAL S1

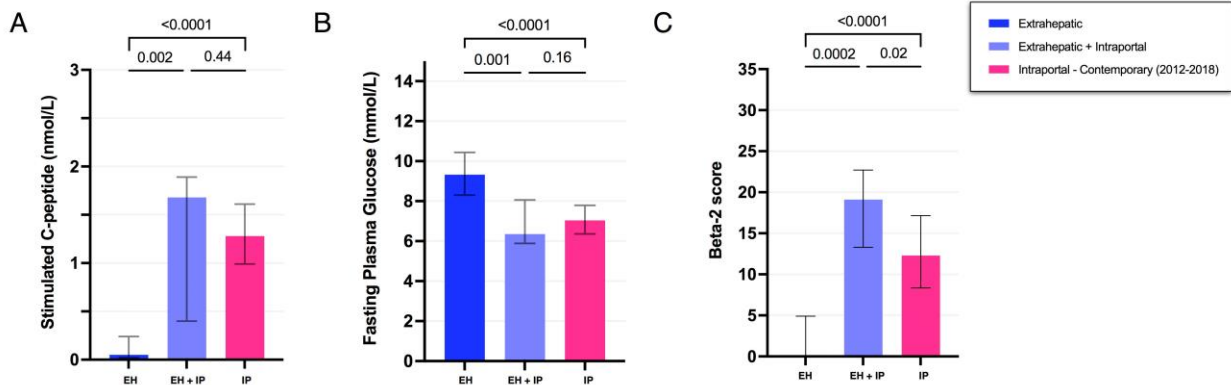


Figure S1. Era matched comparison of stimulated C-peptide and secondary outcomes comparing extrahepatic islet cell transplant, intraportal islet cell transplant (2012-2018), and second (intraportal) transplant in patients who initially received extrahepatic implantation. A) Stimulated C-peptide; B) Fasting plasma glucose; C) BETA-2 score.

Extrahepatic versus Intraportal Pancreatic Islet Transplantation

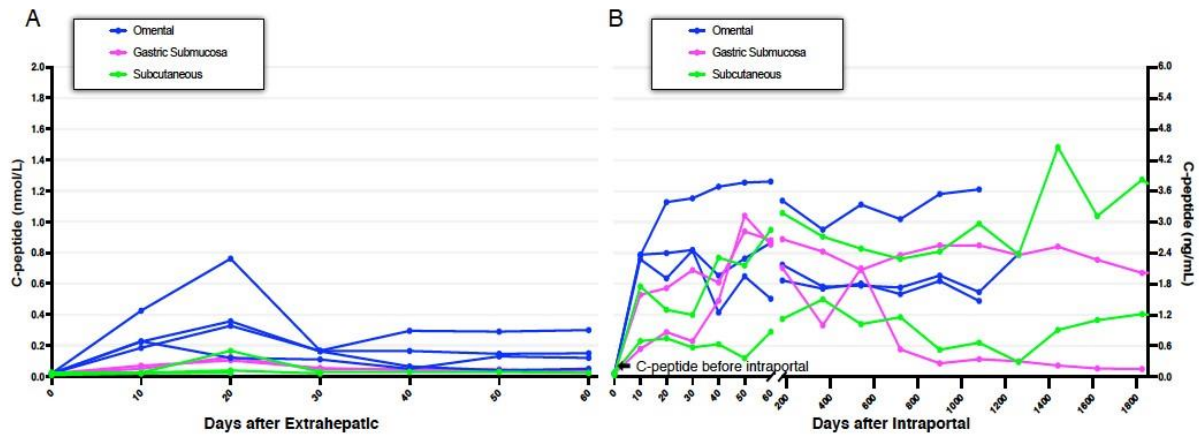


Figure S2. Individual C-peptide production after extrahepatic transplant for each extrahepatic transplant. A) C-peptide 10-day averages for the first 60-days after implantation B) C-peptide after intraportal transplant in patients who initially received extrahepatic implantation (extrahepatic group).

Extrahepatic versus Intraportal Pancreatic Islet Transplantation

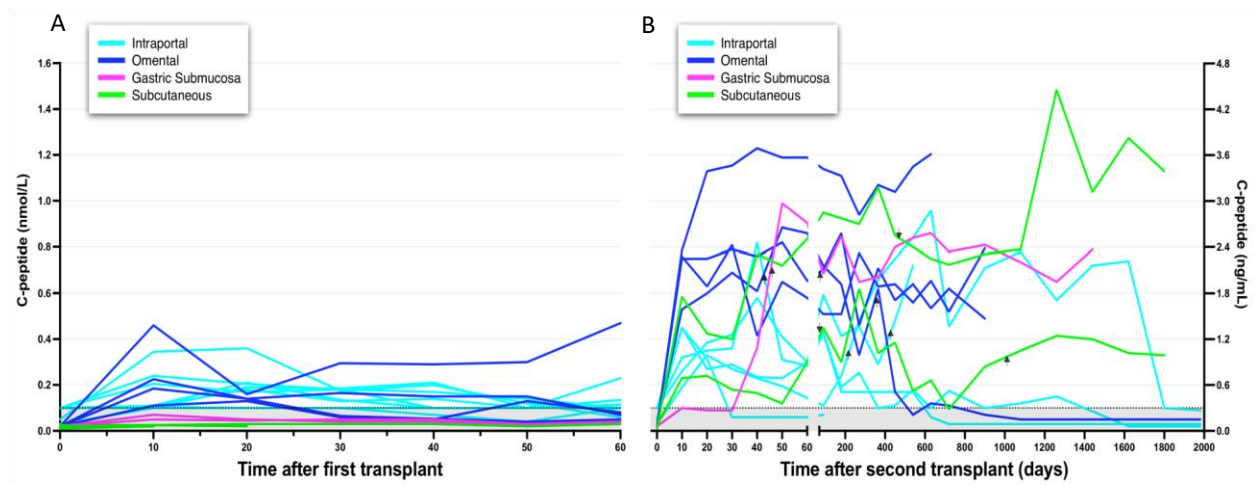


Figure S1. Fasting C-peptide values for patients with early graft failure and/or primary nonfunction following islet transplantation. Primary non-function is defined as failure to achieve C-peptide >0.1 nmol/L, and early graft failure is defined as a return to C-peptide values <0.1 nmol/L (or baseline) prior to a subsequent infusion or within 60 days of first infusion. A) C-peptide 10-day averages for the first 60-days after implantation B) C-peptide after subsequent intraportal transplant in patients who initially had early graft failure and/or primary non-function.

Extrahepatic versus Intraportal Pancreatic Islet Transplantation