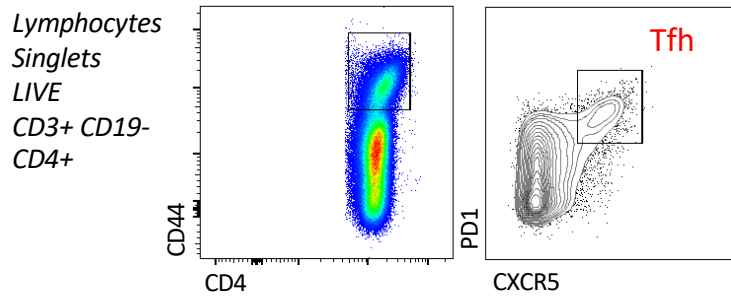
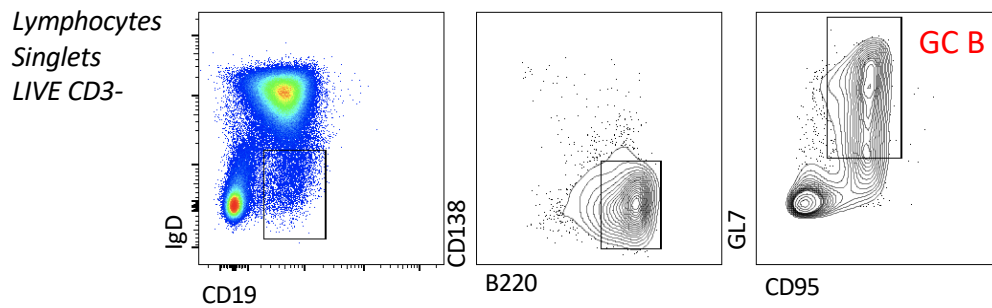


SDC, Figure 1

A



B



SDC, Figure 1. Gating strategy for murine Tfh and GC B cells

Mouse draining lymph nodes were processed and stained for Tfh and GC B cells. (A) Live $CD4^+$ T cells were gated on $CD44^{hi}$ cells and Tfh cells were identified as the $CXCR5^+PD-1^{hi}$ population. (B) Live $CD3^-$ lymphocytes were gated on $CD19^+IgD^-$ and then $B220^+CD138^-$ B cells. GC B cells were identified as the $CD95^+GL7^+$ population.