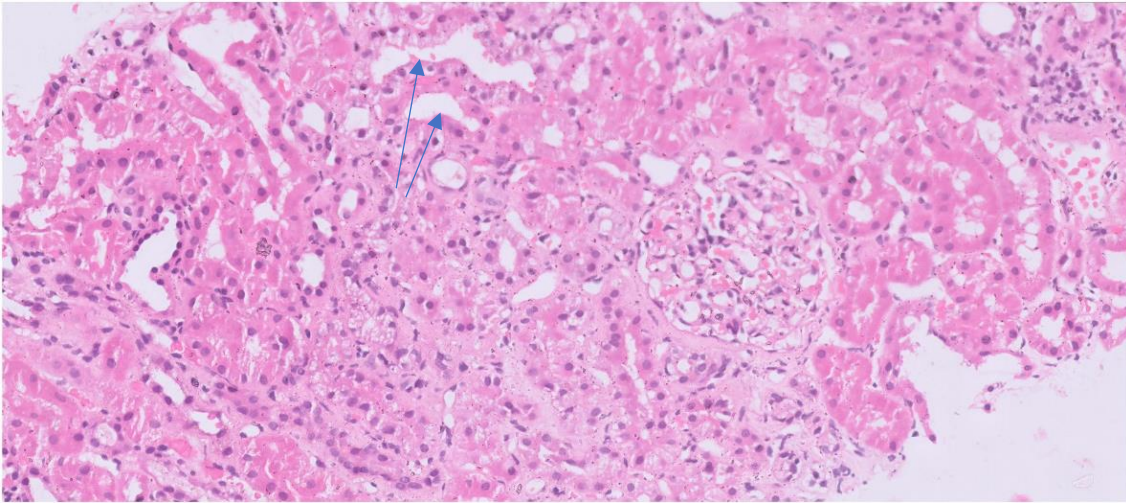
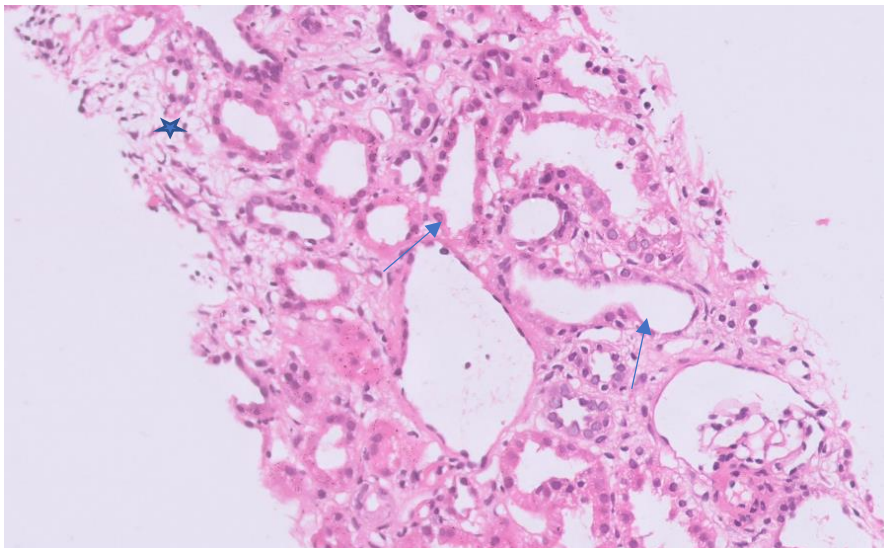


## **Figures S-HPE [1-5]**



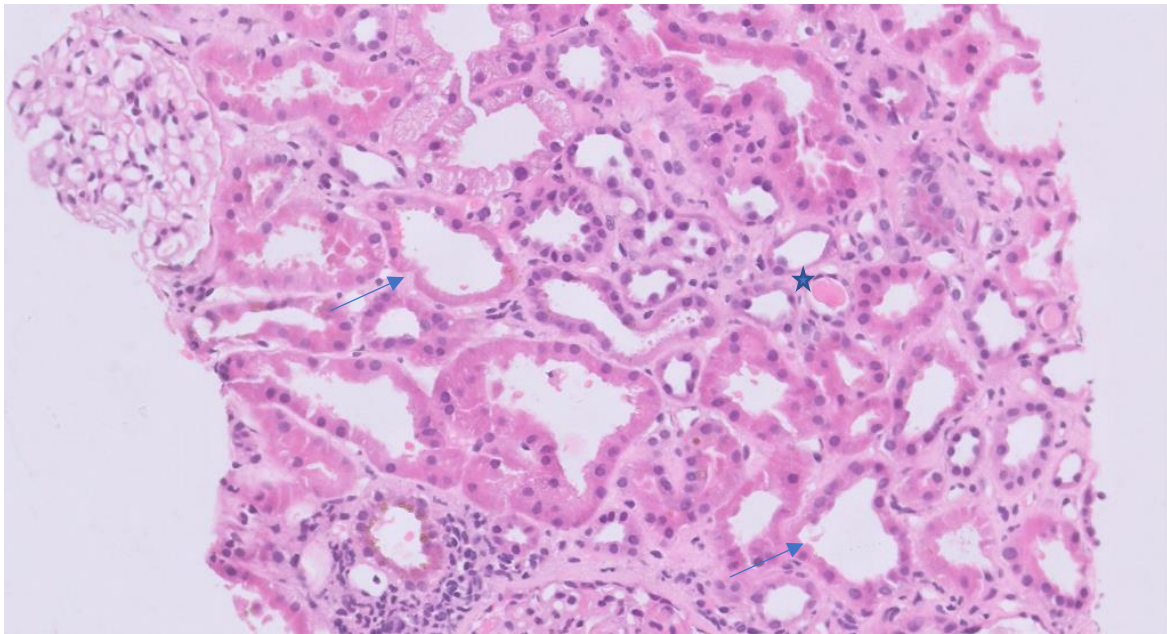
### **1. KB-S3 NMP Protocol Biopsy**

Photomicrograph shows focal moderate acute tubular injury (arrows) whereas glomerulus is normal (H&E, x 200, original magnification)



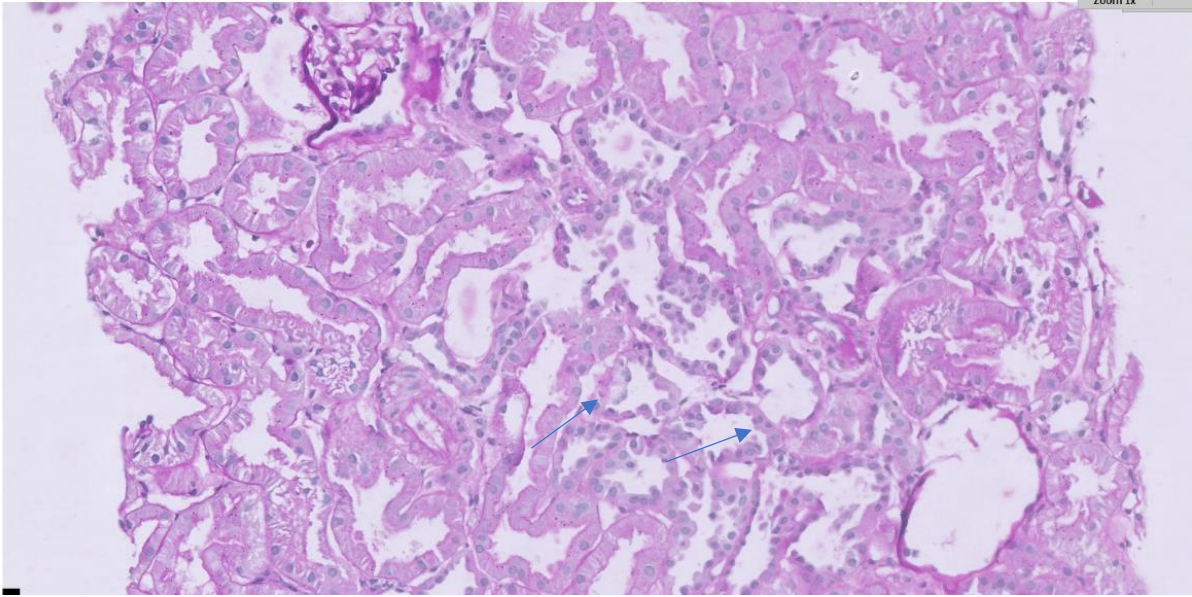
### **2. KB-S3 SCS Controls**

Photomicrograph shows severe acute tubular injury (arrows) with accompanying moderate interstitial oedema (Asterix), whereas glomerulus and arteriole are normal (H&E, x 200, original magnification)



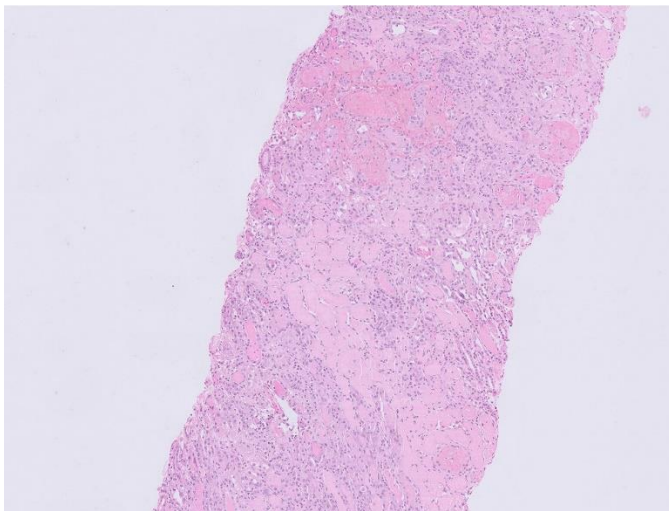
### 3. KH-S3 Control SCS Protocol Biopsy

Photomicrograph shows moderate (arrow) to severe (Astrix) head acute tubular injury with focal lymphomononuclear infiltrate, whereas glomerulus is normal (H&E, x 400, original magnification)



#### 4. **KH-S3 NMP** Protocol Biopsy

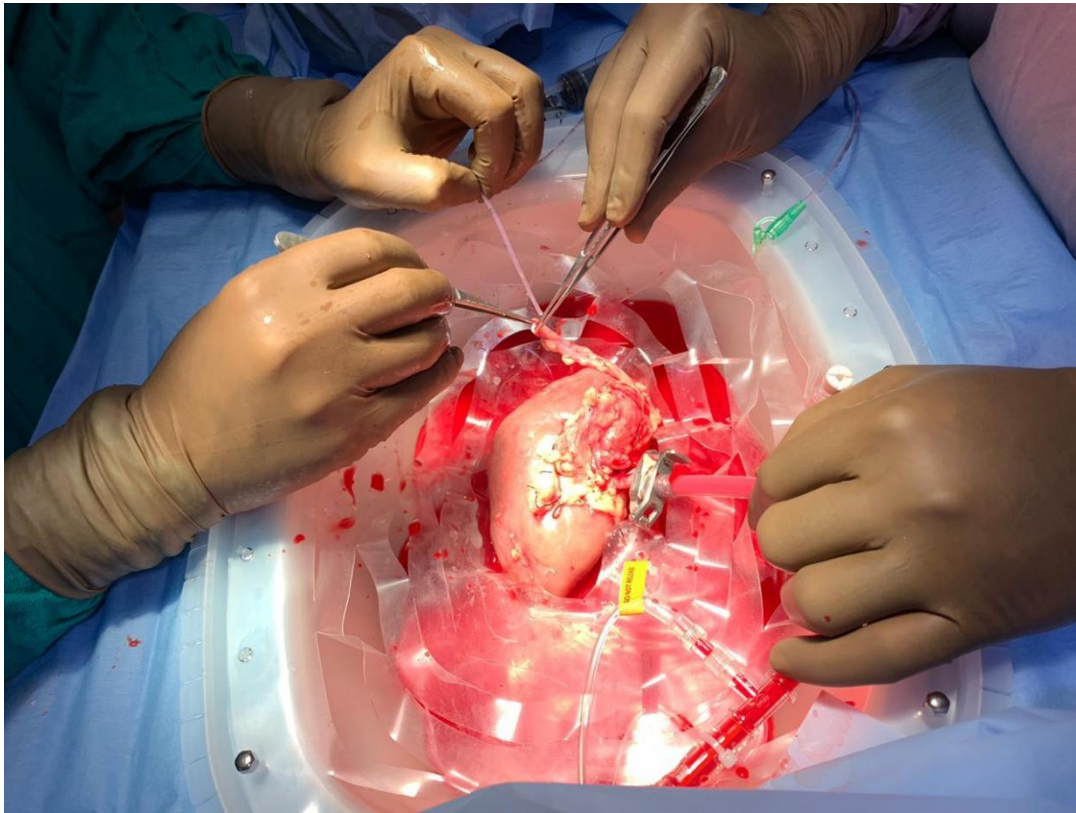
Photomicrograph shows focal moderate acute tubular injury(arrows) whereas glomerulus is normal (PAS, x 200, original magnification)



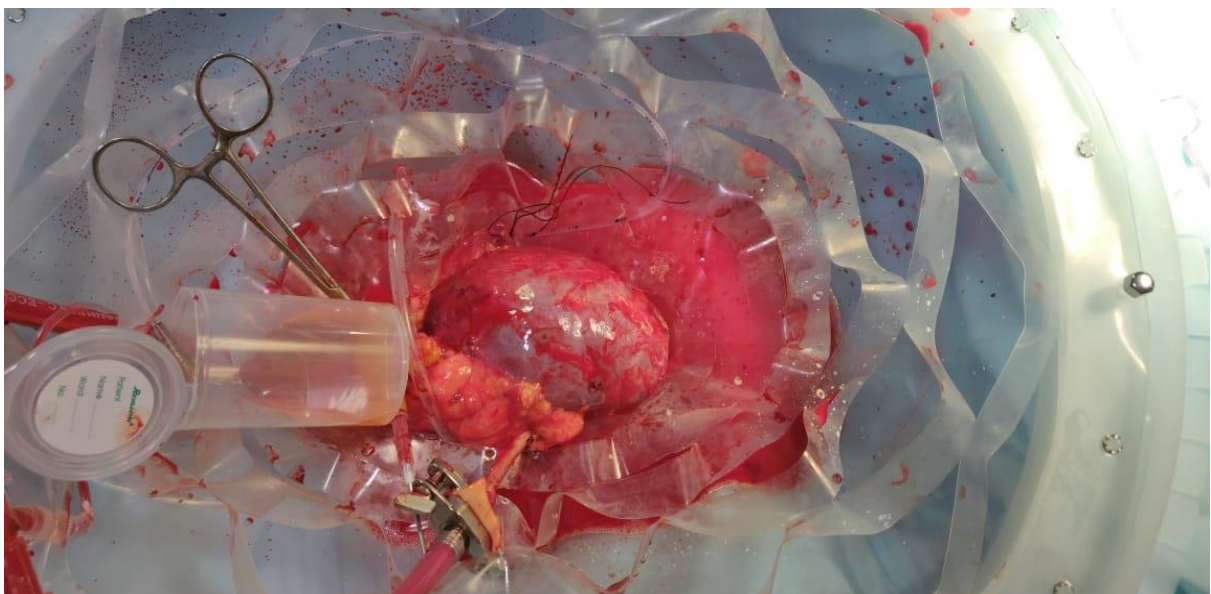
#### 5. **KG-S3 NMP** Photomicrograph shows fibrin thrombi in both glomerulus and interlobular artery (200x, Hematoxylin and Eosin)



## **Figures-S NMP [1-5]**



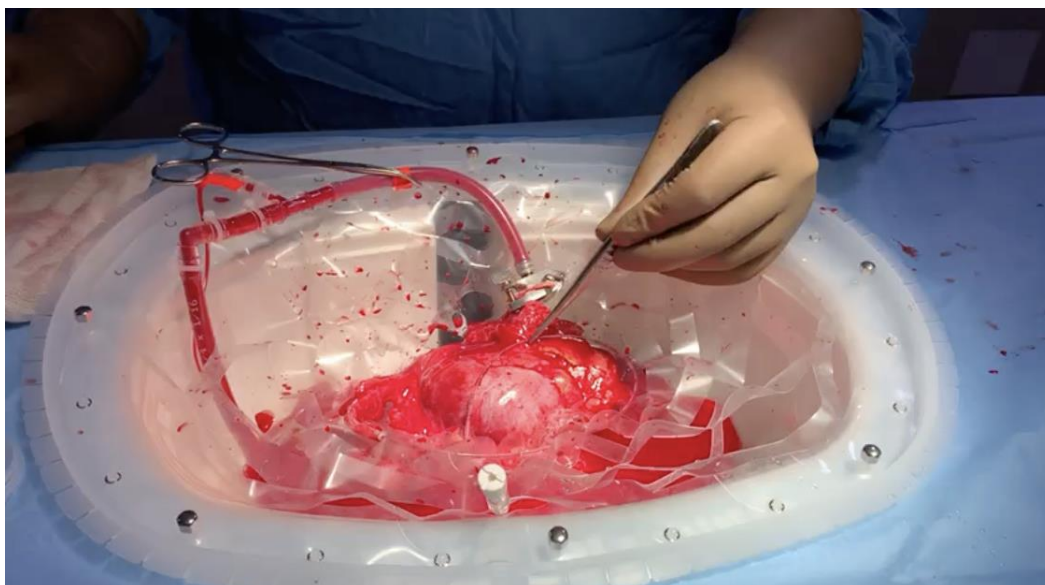
**1. Fig KD-S3**





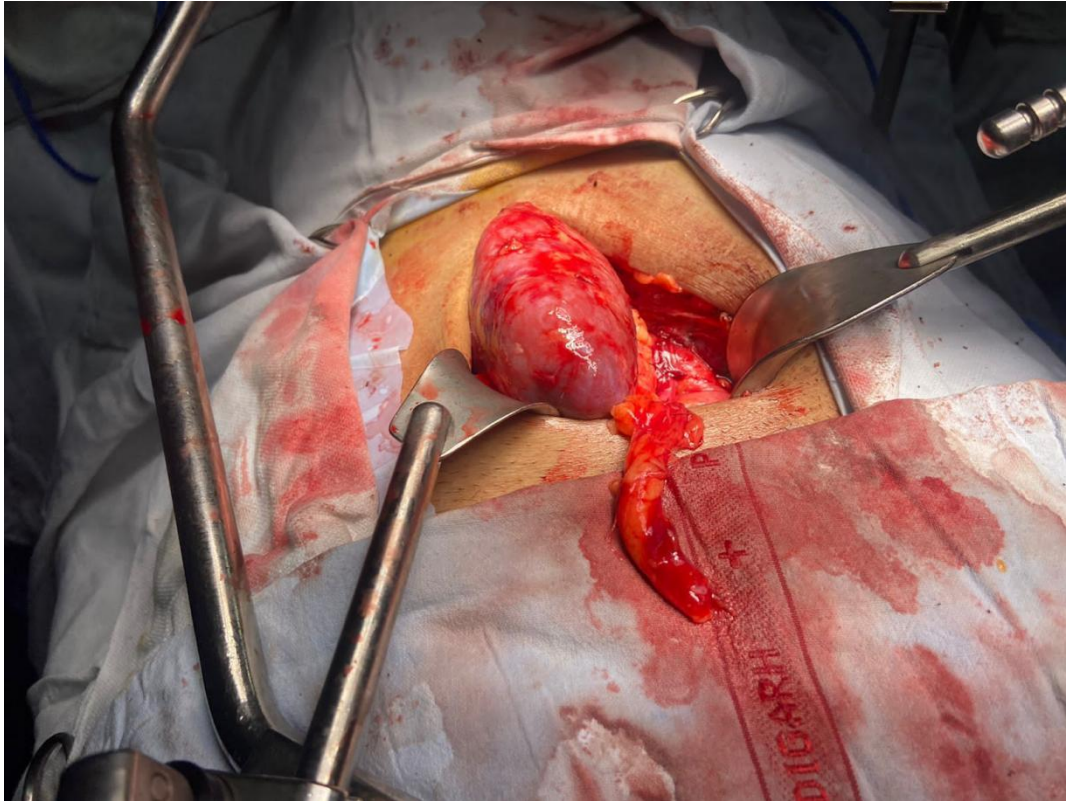
- Flow parameters during 2 hours on NMP.

## 2. KH-S3

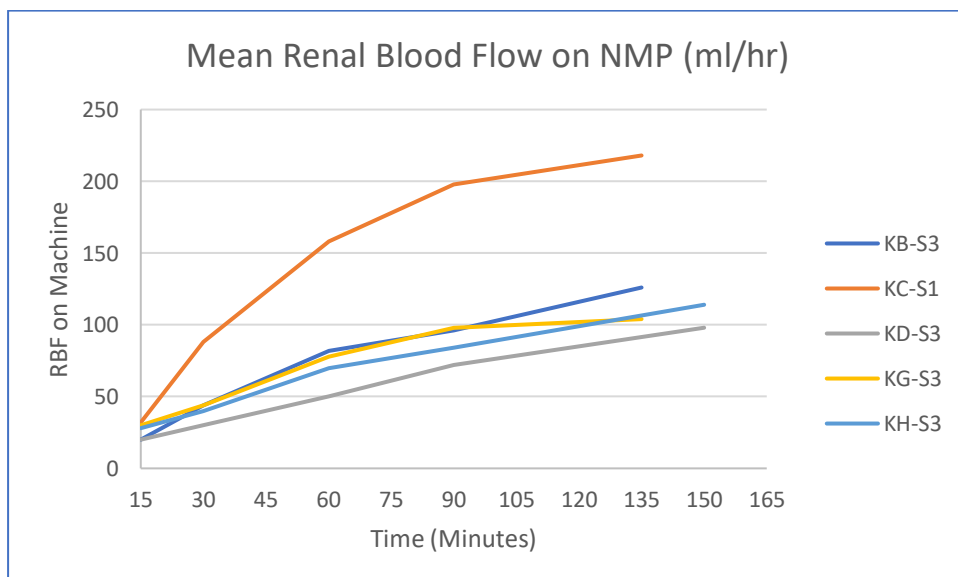




### 3. KC-S1



### 4. KG-S3 Patchy perfusion at the lower pole after an interruption on NMP



## 5. Renal Blood Flow on NMP